

# Rendisk Solus *Transfer*

The economic solution  
for everyone's waste issue





# Rendisk Solus Transfer

## The easy and clean modus to save waste and handling costs.

Rendisk is proud to introduce the ‘Solus Transfer’ food waste management system, which is a cost effective disposal solution to the growing issue that is food waste. It is no longer acceptable to macerate left over food to drain due to the build-up of FOGs (fats, oils and greases) in drain systems and sewers and to tackle this problem, Rendisk is constantly innovating and developing new technology to suit our ever growing client base across all sectors.

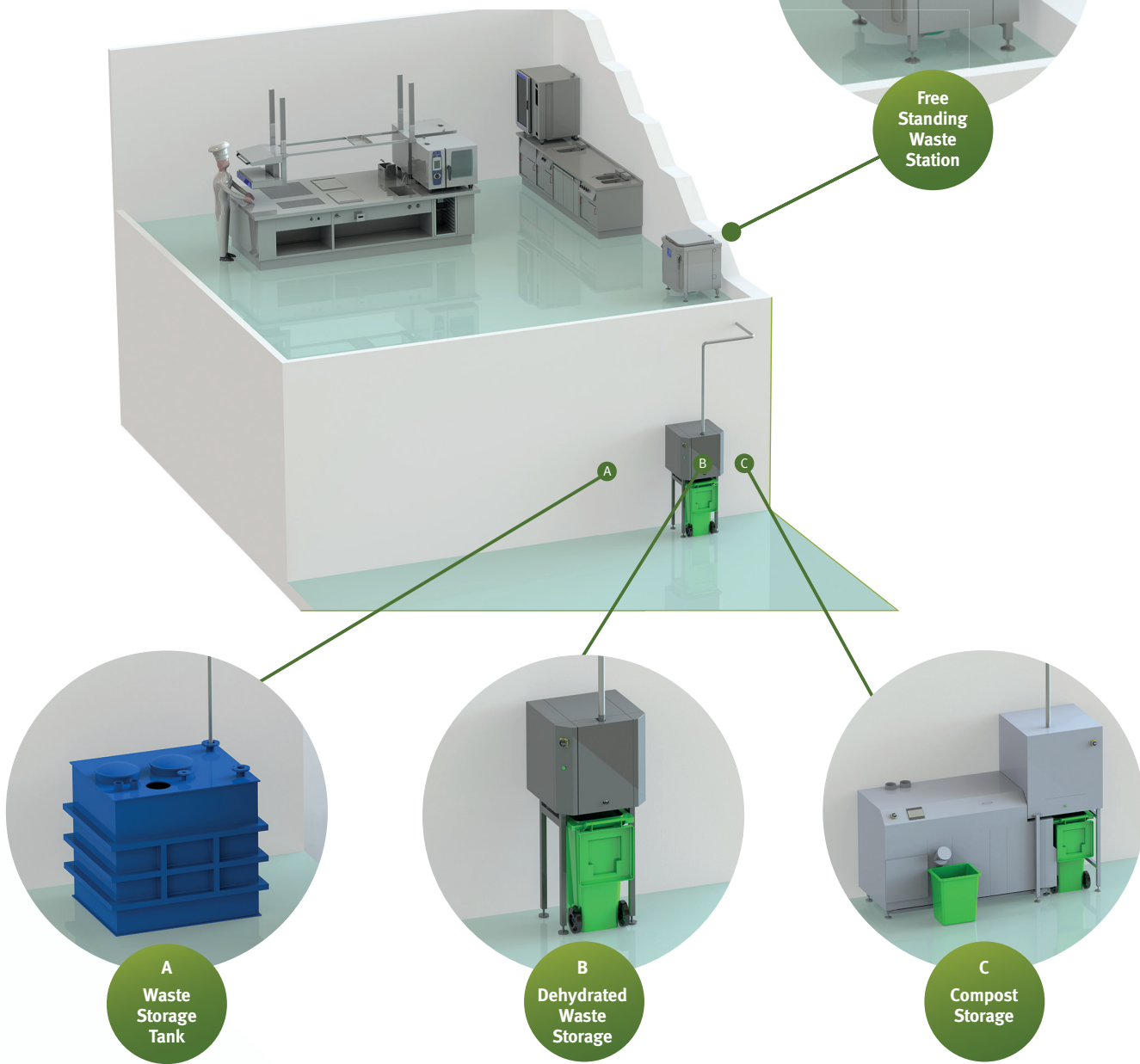
Rendisk's latest product development comes in the form of a pump based food waste system which is perfectly suited to hotels, restaurants, schools, college, universities, care homes, business and industry and several other sector that require food waste management and handling in the most convenient, efficient and cost effective way possible. By choosing the ‘Solus Transfer’ system you choose a future proof solution that has been created with ergonomics, hygiene, ecology and innovation in mind.

The Solus Transfer system contains one organic waste station and a central food waste storage connected with one single pipe system. Therefore this system is perfectly suitable for restaurants and kitchens with multiple floors. The food leftovers are removed from the spot - dish room, preparation area, pantry - by a fully automatic process. The waste stations are designed to handle

food waste in an ergonomic way and as an integrated part of the (dish handling) process. The waste station contains different user programs, so you are always able to choose the perfect fit for the actual waste volumes at that given time.

When using the ‘Solus Transfer’ system food is deposited into a waste station for environmental disposable, ground and transported through thin 50 mm plastic pipes which are simple and cost effective to install into any new build or existing property. The Rendisk Solus Transfer gives you the unique possibility of different types of storage.

In this way you can choose the type of storage that suits your situation best. Waste is either collected as wet waste in a tank (option A), as dry pulp in a central dehydrated waste storage (option B) or as odourless compost in a central composter unit (option C).



### Rendisk Solus Transfer solutions

Free Standing Waste Station in combination with a type of storage solution that suits your situation best:

- A. Waste Storage Tank
- B. Dehydrated Waste Storage
- C. Compost Storage

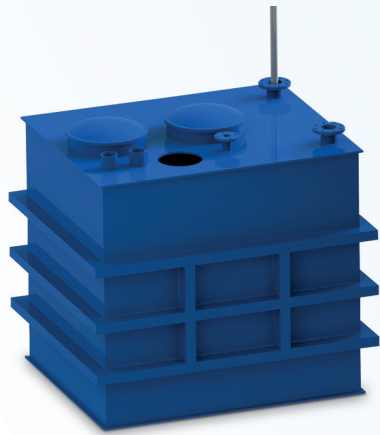




# A food system that fits every situation

## Rendisk Solus Transfer Tank

When option A is chosen we pump the food waste into a 3,000 or 5,000 liter PE storage tank, ready for collection by a waste/garbage truck. This storage tank can be placed above or under the ground. We can add up to 3 waste stations to one single piping system that's connected to the storage tank.



### Tank

- Waste stations with heavy duty grinder
- Compact solution, waste station 0.6 m²
- 50 mm PVC piping
- 3,000 or 5,000 liter PE storage (earth) tank as standard with larger models available on request

## Rendisk Solus Transfer Dewaterer

As an alternative we can dehydrate the food waste using a central dewatering unit. This unit has a very small footprint of only 1 m². By processing your food waste like this we can reduce it by up to 80% in order to save unnecessary disposal costs and to avoid smells. Dry odorless pulp is collected and can be removed in conventional waste containers. This type of storage has a maximum of 1 waste unit.

‘Solus Transfer’ is capable of handling all types of food waste thanks to the heavy duty grinder built into all Rendisk waste stations. Bones, seafood shells, coffee and carbohydrates included, no waste separation or double handling is required at all saving time and costs of labour.



The economical pump based food waste system which contains one waste unit and a central storage unit (pictured: dewater unit).

### Dewaterer

- Waste stations with heavy duty grinder
- Compact solution, waste station 0.6 m²
- 50 mm PVC piping
- Dewatering unit of 1 m²



## Rendisk Solus Transfer Circular

With our third option of the Rendisk Solus Transfer Circular, a central composter unit, we take the processing of food waste to a higher level. Cause we're not only dehydrating the food waste, but also turn it into a safe compost. As a result you reduce your food waste by up to 92% and the remaining output, the compost, is no longer classified as waste but as a new product.

## Do not waste the foodwaste, treat it!

The collected organic waste of the 3 different types of the Solus Transfer can be reused for biogas, composting or digesting due to its calorific content. All collection solutions can be provided with a level indicator. So with our Solus Transfer system you process food waste not only in economic but also in a environmental friendly way.

### Circular

- Waste stations with heavy duty grinder
- Compact solution, waste station 0.6 m²
- 50 mm PVC piping
- Composter unit of 6 m²

### System features & details

- Transportation up to 45 meters
- Vertical waste transportation to a maximum height of 3,5 meters
- System capable of handling up to 450 kg of waste per hour
- Easy to operate touch panel
- Advanced automatic cleaning cycle





## Technical Data

### Waste Station

Material	: Stainless steel AISI 304
Capacity	: 450 kg/hour
Cycle capacity	: 16 liters/cycle
Sound level	: With isolated cover, 69 db.
Dimensions	: 949 X 763 X 745 mm
Hot water	: 15 mm for cleaning only (appr. 5 liters/day)
Cold water	: 15 mm capacity app. 6 liters/cycle
Vacuum pipe	: Outside diameter 50 mm. 1,5" connection
Electrical	: 400 V, 3 ph+ N, 3 kW (2,2 kW motor load) : Main circuit breaker C-characteristic

### Storage capacity

#### Tank (A):

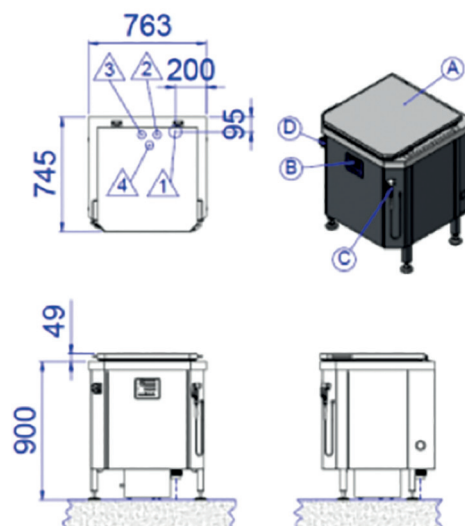
Holding capacity	: Standard 3,000 or 5,000 liters
Outlet connection	: 4" or 100 mm
Electrical	: 230 V, 1 ph+ N, 0,33 kW

#### Dehydrated waste(B):

Capacity	: 450 liters/hour
Electrical connection	: 400V, 3 ph+N, 1,5 kW
Water connection cold water	: Internal thread 1/2"(min. pressure 2,5 bar)
Water connection hot water	: Internal thread 1/2", 50 - 70 °C (min. pressure 2,5 bar)
Drain connection	: 50 mm (outside diameter)

#### Circular fertilizer (C):

Capacity	: 500 kg/day
Electrical connection	: 400V, 3 ph+N, 18,5 kW
Water connection cold water	: Internal thread 1/2"(min. pressure 2,5 bar)
Water connection hot water	: Internal thread 1/2" 50 - 70 °C (min. pressure 2,5 bar)
Drain connection	: 50 mm (outside diameter)



## Groundbreaking Solutions in Food Waste Management

Do you want to know how Rendisk can make your kitchen smarter, more efficient and more sustainable? Look for the Rendisk dealer in your country at [www.rendisk.com](http://www.rendisk.com) or call +31 (0)800 444 5 444.



### RENDISK B.V.

Birnieuweg 2  
NL-7418 HH Deventer  
The Netherlands

### CONTACT

T: +31 (0)800 444 5 444  
E: [info@rendisk.nl](mailto:info@rendisk.nl)  
[www.rendisk.com](http://www.rendisk.com)